


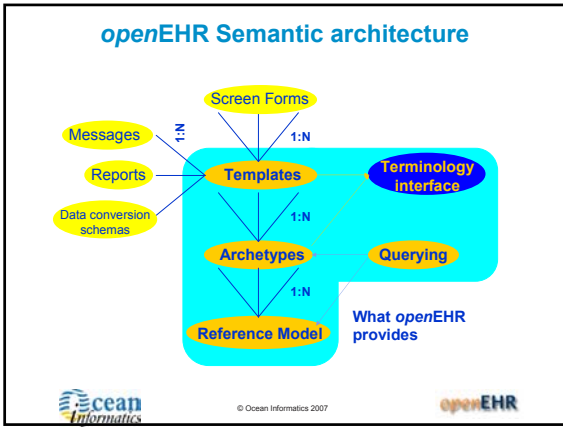
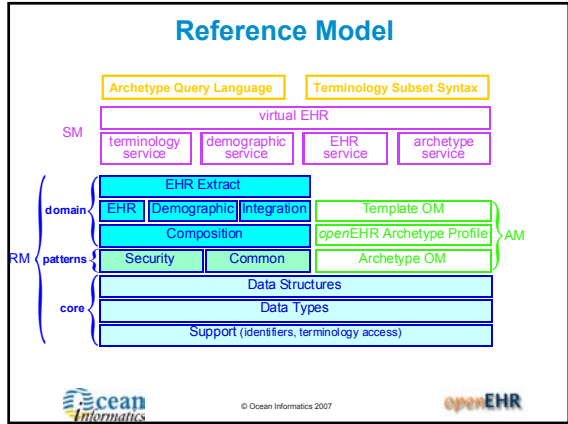
openEHR

Archetypes & the openEHR Health Computing Platform

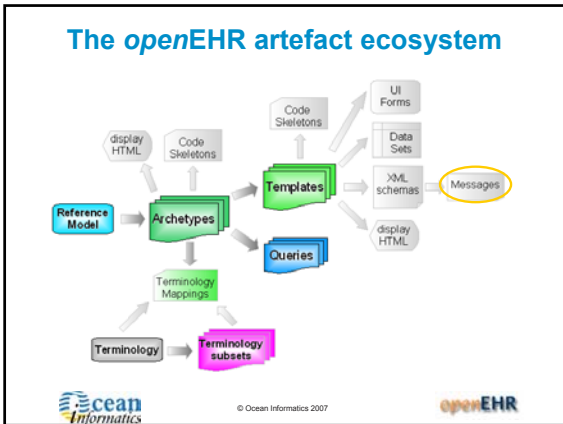
Thomas Beale
Sam Heard

Copenhagen
May 19/20 2008





- ### The health computing platform
- Going from software and information architecture to system architecture...
- Modelling tools
 - Create clinical models (archetypes, templates)
 - Create terminology subsets
 - Define archetype/terminology bindings
 - Runtime system
 - Use templates to create data
 - Store data
 - Query data



- ### Knowledge tools
- Archetype workbench:
- A technical GUI application that parses and analyses archetypes
- Archetype Editor:
- Clinician's tool for building archetypes
- Template Designer:
- Designers tool for building templates & forms
- Terminology Subset Editor
- Terminology specialist tool for building subsets

Standards Basis

All based on CEN/ISO-standardised:

- Archetype Definition Language (ADL) and
- Archetype Object Model (AOM)

Forthcoming Template Model & schema

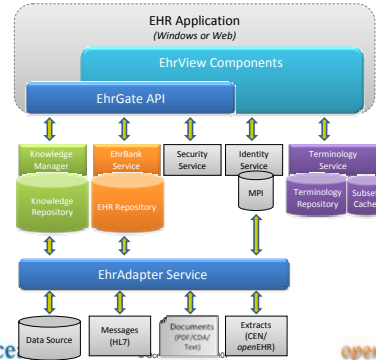
Forthcoming Template Data schema



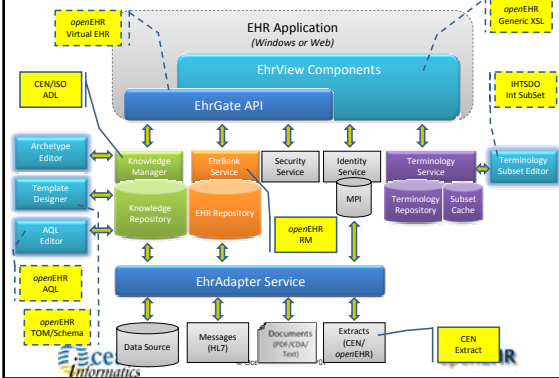
© Ocean Informatics 2007



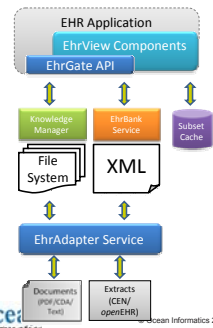
Scale DOWN



Ocean's openEHR Architecture



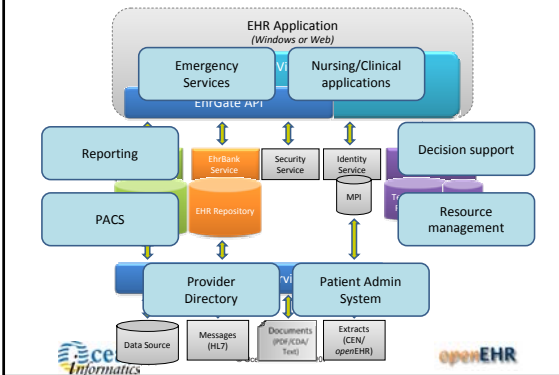
Scale DOWN



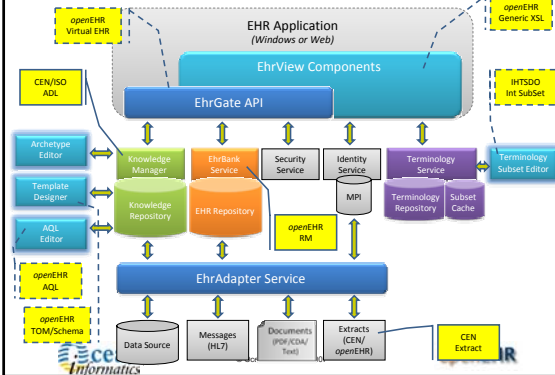
© Ocean Informatics 2007



Scale UP



Ocean's openEHR Architecture



The artefacts...

